

Temporary block bolts BR150-14
 1/8 Rivets BR150-14

Temporary open holes
 Fill with 1/8 rivet BR150-14

Remove existing rivets - Drill
 and ream for 1/8 Rivets
 BR150-14

New Washers
 BR150-1E
 New Cotter Pins
 BR150-14

New Pin
 BR150-1D
 New Pipe Rings
 BR150-1C

New 12 WF 53"
 BR150-1A

New Pipe Rings
 BR150-1B

Existing Pin
 New Cotter Pins
 BR150-14

Existing bracket and pin
 from above rebraced base

BR150-1B 1/2" F22
 BR150-1C 4" F22

6X8 Pipe

BR150-1B PIPE RING
 BR150-1C PIPE RING

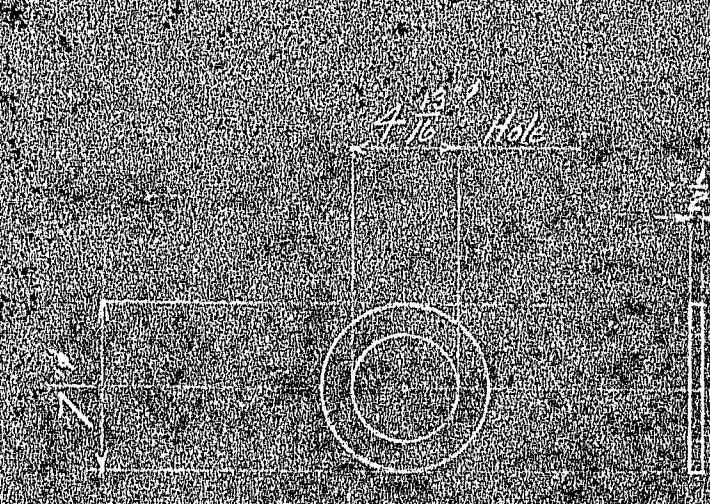
Mtl. for one BR150-1A
 1-12 WF 53" x 8 1/2" a
 4-7/8 9 x 1/2 x 13 6 (1/8" weld all around)

BR150-1A ROCKER ARM POST



Standard recessed pin nut PN25
 for 3/8 thread - Furnish two with
 each pin BR150-1D

BR150-1D PIN



BR150-1E WASHER

NOTES:
 PAINT: One ship coat of red lead

BR150-14	75			1/8" Button Hd Rivet 2" long
BR150-14	200			1/8" Button Hd Rivet 2 1/2" long
BR150-14	16	5350		1/2" Cotter Pin 15" long
BR150-1B	64	Steel	5350	Std 3/4" bolt x 2 1/2" long with sq hd hex nut & washer
BR150-1C	128	Steel	5350	1" Jamed Bolt x 2 1/2" U.H. with sq hd hex nut & lock washer head and nut to be 1 1/2 across flats
BR150-1E	5	Steel	5350	WASHER
BR150-1D	4	Steel	5350	PIN
BR150-1B	3	Steel	5350	PIPE RING
BR150-1C	3	Steel	5350	PIPE RING
BR150-1A	4	Steel	5350	ROCKER ARM POST

MARK	REQ'D	MAT'L	REQ. NO.	NAME	REMARKS
BILL OF MATERIAL					
JOHN A. ROEBLING'S SONS CO., TRENTON, N. J.					
DESIGNED BY	JOHN A. ROEBLING	DATE	1943	SCALE	1/2" = 1'
APPROVED BY	ROBINSON AND STEINMAN	DATE	JULY 13, 1943	SERIAL	BR150-1
DWG. NO.	254207-4	TITLE	Cable Bent Rocker Arm	CH. DR.	ENG'R
REFERENCE DRAWINGS					

